

SONAMUKHI COLLEGE

(Estd. - 1966)

NAAC # B(2.37)
1st Cycle :: 2016



(Affiliated to Bankura University from 01-01-2017)
(Previously affiliated to The University of Burdwan since 1966)



PROSPECTUS 2021-22

P.O. + P.S. -SONAMUKHI, Dist. BANKURA
Pin Code-722207, West Bengal, INDIA
Phone: 03244 275251

Know us at: www.sonamukhicollege.ac.in
www.sonamukhicollegebankura.com

Admission help-desk: smkadm21@gmail.com
2021-22 Online Admission link: <https://admissionsonamukhicollege.in/>

Providing personal and permanent mobile number, Email ID is essential



FROM THE DESK OF PRINCIPAL

“EDUCATION IS THE MANIFESTATION OF PERFECTION ALREADY IN MAN”-- **Swami Vivekananda.**

The journey of Sonamukhi College, with the aim for providing platform of higher education, has been started in 1966 to cater the need of the aspiring students of Sonamukhi Block and its adjacent blocks which are semi-urban and rural. The College was initially affiliated to The University of Burdwan till the Academic Session 2016-2017. The affiliation is extended by The Bankura University since Academic Session 2017-18. It is a co-educational U G college situated in the lap of nature beside the Sonamukhi-Bishnupur State Highway.

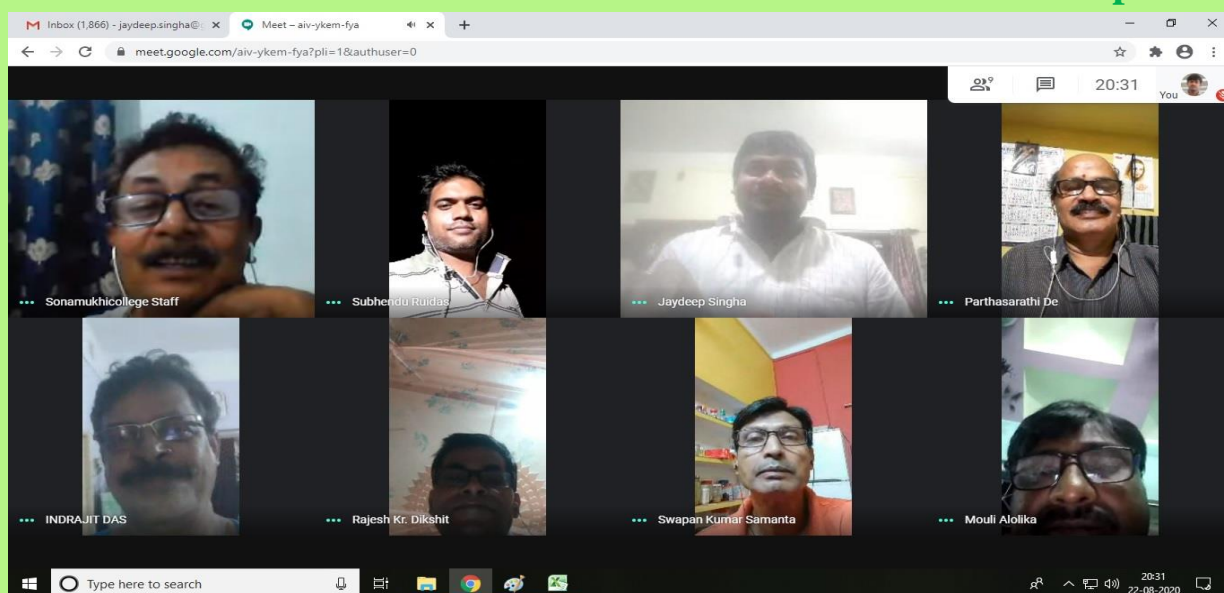
The Motto of the College is to promote higher education to the students, who generally belong to agricultural & weaving background, with the help of the indomitable spirit and spontaneous enthusiasm of the faculty members of different departments of the college. With the passage of time it has achieved its name as an altar of higher learning not only for the local students but also to those in far extended region. Consequently, the students' strength is increasing year after year. The students make us elated with their remarkable progress and success in the field of education and in various extra-Curriculum windows like NCC, NSS, Magazine, Youth Parliament, Cultural and Sports.

The college ensures the suitable environment to the new-comers, who are going to have their admission here in 2021-22, for achieving their goals in different vistas and thus they will add new feathers to the crown of the college as well as to the society.

Let us follow Gurudev,

“THE HIGHEST EDUCATION IS THAT WHICH DOES NOT MERELY GIVE US INFORMATION BUT MAKES OUR LIFE IN HARMONY WITH ALL EXISTENCE”

Principal



'Online Mode': The demand of the situation

LOCATION

Sonamukhi College, the pride of Sonamukhi, is on the state highway connecting Bishnupur & Durgapur and around 1 km away from the century-old Sonamukhi Municipality situated in the heart of the town. The college is well-connected with Bankura Sadar, Burdwan Sadar, Bishnupur Subdivision, Durgapur Subdivision and other Blocks of Bishnupur Subdivision of Bankura district. It is also in smooth connection with Bankura, Burdwan and the state capital Kolkata by the Bankura-Masagram train line. Sonamukhi Forest Range is within a stone's throw of our college. Irrigation Department, Block Development Office, Forest Department, Block Land and Revenue Office, Athena School, Athena D. Ed. College, Athena B.Ed. College and Satsanga Ashram of Sri Sri Thakur Anukul Chandra encircle our sacred college.

HISTORY

In the glorious year of 1966, some noble souls assembled to lay the stone of Sonamukhi College under the leadership of Prof. Anantalal Patra. Late Bishnupada Dey and Late Shaktipada Dey extended their helping hand unconditionally by donating 5 acres land for the foundation as well as construction of the college. A large number of people stretched their kind hand by providing financial support for the establishment of the college. Irrespective of caste, creed, financial condition, the people showed their generosity by supporting the noble task with happiness and smile. The collective effort of the people belonging to all levels of society made it possible, the inception of Sonamukhi College as a holy place of higher education.

Sonamukhi Block and its adjacent areas were densely populated. Poverty, ignorance, illiteracy, superstition and orthodoxy were their permanent companions. The initiative of imparting education to the first generation innocent learners of these areas was started in the three rooms of Sonamukhi Bindubasini Jubilee High School. The incessant and unflinching efforts achieved perfection on 17th August 1966 as the much expected approval letter from “The University of Burdwan” had been reached our college. Prof. Anantalal Patra, the founder principal, is no more with us but in all the stones, bricks, woods, plants and in everything within the college, his presence is felt, his contribution is realized. The degree of completeness in recognition was achieved in the later stage i.e. both 2(f) and 12B from UGC.

AN OVERVIEW OF THE COLLEGE:

Handful number of students started their higher education in the light of Arts and Commerce Stream and now the College has turned into a matured tree having 18 branches in the fields of Science, Arts and Commerce. The college is now one of the premier institutions of higher education in general degree course under Bankura University.

Sonamukhi College, one of the reputed institutions of higher learning in Bankura District, is a lucrative college for the students of not only Sonamukhi block but also the blocks of its proximity and even Bankura Sadar. The college has earned good reputation for academic excellence, pleasing environment, eco-friendly geographical ambiance, cultural acumen and sports-spirit. The students can learn here in a friendly manner and they can exchange their views with the teachers without any hesitation. What is more, they are always inspired and motivated to take part in all kinds of cultural activities, sports, debates etc.

A new opening is introduced in 2019-20. The Centre of Netaji Subhas Open University is dedicated for those who belong to under privileged section in the light of education. Both UG & PG courses are available. The list of courses through this centre can be viewed through website.

VISION

Learning is a pleasure. Education in a joyful way is the Vision. To create an environment that will be conducive to learning and innovation. Provision of proper infrastructure and infusion of adequate opportunities will facilitate the students to step into higher studies. The College has concentrated into this vision. Besides, creating of career oriented comprehensive education, ambience of virtual/e-facilities for motivation of students is a need indeed for understanding the mysteries of existence, discovery of scientific truths and realization of the philosophy of this wonderful universe. Through our ideal system of teaching and regular interactions, they will learn social and moral values, and thus, they will remain indebted forever to this institution in particular and to the society in general. Cultivation of education to those who are deprived from regular study is the social responsibility. Extension of activities in collaboration with Corporate for those, who are away from education, is also a vision.

MISSION

- To make a true human being in every angle of life and its outlook is the main mission.
- To provide higher education as well as skill oriented facilities to all the students.
- To uplift the students, who are deprived, underprivileged and economically weaker.
- All-round development of body, mind and soul of the students for sailing the vessel of life with courage, confidence, determination and patience.
- To inculcate reverence, passion, consciousness and tenacity among the students.
- Last but not least, to make strong and determined character to make them a good citizen for the betterment of mankind.

OBJECTIVE

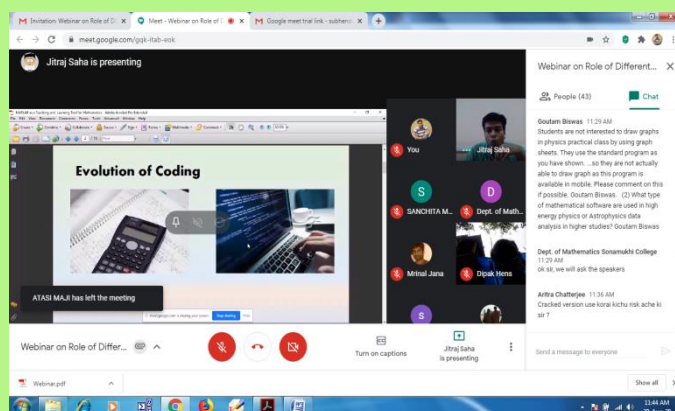
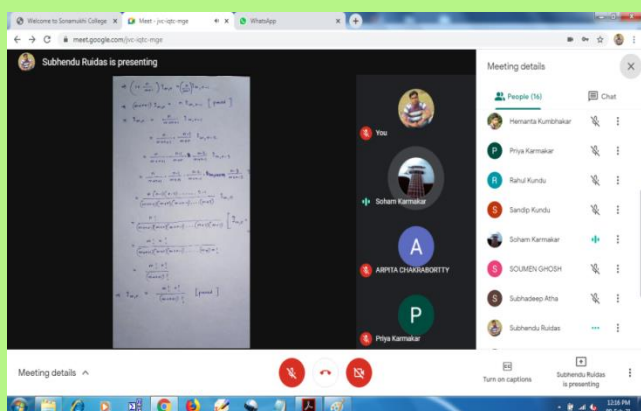
Imparting class room education to the students of various Honours and Programme courses under the stream of Science, Arts and Commerce is the objective. Subsidiary objectives are improvement in campus atmosphere and canteen facilities. Beside the increase in number of books for new CBCS syllabi, provision for e-resources in teaching-learning-evaluation has been introduced to overcome the COVID-19 pandemic situation. In the current situation, ICT based classroom teachings have also been implemented. A new dimension in history of Sonamukhi College has been achieved. The fact is the initiation of amalgamated activity with corporate spectrum in this very academic session.



Running of regular activities during pandemic situation

We all know that the whole world has been suffering from the SARS COV-19 virus for the last one and a half years. It has forced the educational institutes to disallow the physical presence of the students into the institute premises. The education system has changed thereafter dramatically with the distinctive rise of e-learning, whereby teaching is undertaken remotely and on digital platforms. In this situation, the faculties of Sonamukhi College have outstretched their hands on teaching-learning procedures and other extracurricular activities through online mode. First of all, semester-wise and category-wise (Hons./Prog./GE) WhatsApp groups have been created. Different necessary information are provided to the students through these WhatsApp groups along with the notices served on the college website. The students can easily interact with the departmental teachers through WhatsApp groups. Classes are also being held routine-wise and regularly in Online mode. Every student has an account in the ERP system of the college website. The faculties upload the respective 'Google Meet' links for online classes on the college website. Students can find the links in their accounts and attend the respective classes using the links. Study materials and assignments are also provided to the students through the college website. Again, every department conducts internal examinations in Online mode through the college website.

The central library of the college has taken great initiatives to provide various e-learning resources to the students. Students have now accounts in N-LIST (Inflibnet) and NDLI (IIT-KGP), and can access the resources available there. A Telegram Group has been created by the library authority with all the students to assist them.



Apart from regular teaching-learning activities, several cultural programs have also been arranged in Online mode during the lockdown period by various departments in the college. Programs, like, Rabindra Jayanti celebration, Mock Parliament, Independence Day celebration, quiz competition, Yoga Day celebration, Birth Anniversary of Subhas Chandra Bose, Republic Day celebration, Birth and Death Anniversary of William Shakespeare, etc. have been held over Google meet platform. It is our pride that every department of our college has organized webinars on very contextual and relevant themes. Online activities of NSS and NCC volunteers are worth mentioning as they extend their hands on various kinds of deeds during the pandemic situation. They have campaigned door to door, warned people about Covid 19 virus, observed International Women's Day by showing posters, and so on.



Extension in College infrastructure in recent times

This year our college has purchased 1.4049 acres of land just beside the southern boundary of our college. Definitely, this will help in developing and strengthening the current infrastructure of this college in near future. Also, the extension of the college building in the form of third floor has been feasible in last academic year. Currently, construction work is also in progress on the first floor of central library of our college to make it two-storied. Again, we must not forget to mention that the new administrative building of the college has been functioning since the academic year 2018-19.



In the Chair :: Sri Biswanath Banerjee, Ex-Reader and Former TIC

Front row from left : Samapti_Rudra Ratul_Saha Jayanta_Dutta Kaberi_Mohanty Debashis_Biswas Swapan_Ankure Kunti_Dome Boni_Roy Asim_Konar Santu_Konar
. Anupam_Mandal Shankar Das ShuvraK_Sinha AsimK_Guin ManasK_Ganguli Ashok_Dhani Subhajit_Dey Jyotirmay-Panja Akshay Laha Ayananta_Lohar

Second row from left : Ashok_Mukherjee Asoke_Gain Amaresh_Bagdi Dharmadas_Banerjee Madan_R_Jadav Chanchal_Mukherjee ParthaS_Roy Bhirab_Banerjee
BansiB_De Bappaditya_Mandal Shelly_Banerjee Pranay_Sarkar Chhaya_Mukherjee Debabrata_Chatterjee Shantimoy_Laha Rabisankar_Siddhanta Jaydeb Lohar
SwapanKr Samanta Javdeep Singha Nikhil De Biswanath De Mrinmoy Sarkar

অতীত ও বর্তমান যুগল মিলন - একটি বিশেষ মুহূর্ত - সম্মিলিত প্রচেষ্টা - লক্ষ্য প্রসারিত ভবিষ্যৎ



Inaugural moment on the day of land purchase

The college shows its gratitude to Dr. Sunita Bandyopadhyay, formerly assistant professor of our college, for her free-hand donation of Rs.50000/-(Fifty thousand only) in memory of her father for opening a resource center for the unemployed youth of the college and its surroundings.

The college is also very grateful to Mr. Bishu De, former general manager of KJS Cement Factory, Satna, Madhya Pradesh for his valuable donation of Rs.4000/-(Four thousand only) for motivating the students in engaging the cultural activities.



The college is very hapless as in the previous academic session, it has lost three academic giants namely, Prof. Dilip Dutta, ex-lecturer, Selection Grade of History, Dr. Dharmadas Banerjee, ex-associate professor of English, Sri Debabrata Karmakar, ex-Cashier and Sri Sambhu Bauri, ex-Bearer of this college. All the teaching, non-reacting staff and the students of our college show heart-felt condolence for these departed souls. Again, the college takes oath not to forget their generous contribution for the progress of the college. We are extremely sorry for such a loss.

The college sincerely expresses its deeply felt gratitude to late Mr. Bishnupada De and late Mr. Saktipada De for donating five acres of land to set up the college campus at the initial stage of the college. The college has named one part of its main academic building as 'Land donor Bishnupada De Block' and another part as 'Land donor Saktipada De Block' to pay homage to their holy initiatives and progressive attitude. Their name will remain ever written in golden letters in the pages of the history of our Sonamukhi college.

AFFILIATION OF COURSES (The Univ. of Burdwan) and continued under Bankura University as per University order.

Year	Name of the Course	Subjects
1966	Three-year B.A. and B.Com (Gen.)	B.A.:- English, Bengali, History, Sanskrit, Economics, Philosophy. B.Com.:-With Adv. Accountancy as elective subject.
1966	U.E.	English, Bengali, Sanskrit, History, Logic, Civics, Com. Geography, Com. Arithmetic, Book Keeping.
1969	B.Com (Honours)	With Adv. Accountancy and Auditing (as elective subjects).
1971	B.A. (Honours)	Bengali.
1973	B.A. (Honours)	Philosophy, Political Science.
1977	H.S. (Sc., Arts, Com.)	All subjects of the course.
1979	B.Sc. (General)	Physics, Chemistry, Mathematics, Botany, Zoology.
1995	B.Sc. (Honours)	Botany.
1996	B.Sc. (Honours)	Zoology.
1998	B.A. (Honours)	History.
1999	B.A. (Honours)	English.
2001	B.Sc. (Honours)	Mathematics.
2002	B.A. (Honours)	Economics.
2004	B.A. (Honours)	Sanskrit.
2006	B.A. (General)	Geography.
2007	B.Sc. (Honours)	Physics
2008	B.A. (Honours)	Geography.
2011	B.Sc. (Honours)	Chemistry
2011	B.A. (General)	Physical Education
2012	B.A. (General)	Education
2012	B.Sc. (Hons.)	Comp. Sc.
2014	B.A. (Honours)	Education
2019	B.A. (Honours)	Social Work

EXTRA ACADEMIC ACTIVITIES:

- (a) **N.C.C. unit for Boys and Girls (one):** Under 56 Bengal Battalion.
N.C.C. Care Taker Officer – Asim Samajpati, Asst. Professor
- (b) **N.S.S. units (three):** **Unit I Programme Officer :** Anupam Mondal, Asst. Professor
Unit II Programme Officer : Subhasree. Majumdar, Asst. Professor
Unit III Programme Officer : Ramprasad Kanrar, Asst. Professor
- (c) **Gymnasium(Under Physical Edu. Dept.):** Anupam Mondal, Asst. Professor
- (d) **Games and Sports :** The college conducts Annual Sports every year. Also, it conducts Inter-college and intra-college sports competition as directed by DPI time to time. The events are organized by the Department of Physical Education under the guidance of Dr. Dipak Kumar Hens.
- (e) **Cultural Functions :** The college organizes Annual Cultural Functions, Quiz Contests, Debate Contests, Music Contests to explore the hidden talents of the students. Even, in this pandemic situation last year, various cultural events have been organized in 'On-line Mode'.
Convenor : Dr. Sumana Sanyal, Asst. Prof.
Convenor : Supriya Saha, Asst. prof.
Convenor : Sudhamayee Kumar, Asst. Prof.
- (f) **Magazine :**
- (g) **Equal Opportunity Cell :**
(For SC, ST, OBC & Minority)
- (h) **Anti Ragging Sub-Committee :**
- (i) **Research Sub-Committee :**
- Convenor : Padmalochan Hansda, Asst. Prof.
Convenor : Subhasree Majumdar, Asst. Prof.

STUDENTS' UNION : Provision of effective and organized Students' Union/Council does exist as per G.O. of Higher Education Department, Govt. of West Bengal. The members of the union are elected by the general students through election as per Govt. order from time to time. The Students' Union takes active role for enrichment in academic environment. The union always comes forward to extend iconic cooperation in helping the poor students and to inspire all students to join seminars, workshops, N.S.S. and N.C.C. Camps, Sports and Games including all other activities of the college.

TEACHERS' COUNCIL: The College has a Teachers' council as per statute of Bankura University. All teachers in substantive posts are members of this council. Students get academic energy and inspiration at every second of clock through various supports.

NON-TEACHING STAFF : Formation of this convergence always reminds their invaluable relentless activity at every moment. All the non-teaching colleagues of this college are extremely coherent and it is reflected in each and every service to the students. Reverberation of their activities occurs in the development of this college since inception.

ALUMNI ASSOCIATION : The college has an association of Ex-students entitled, '*Sonamukhi College Praktani*'. These students have passed out of this sacred house, the Sonamukhi College and at present have established themselves in this world and still on "Their fond breast the parting soul relies".

Joint Activity with Corporate(s):

In view of the vision of this College, an objective to implement the joint activity for the society is needed. The college has crossed the initial. KJS Cement India Ltd, Maihar, Madhya Pradesh has spontaneously send intimation of willingness in this respect at the college email on 2nd August 2020. The initial activities are to promote extra-curricular activities by way of sponsorship in various competitions.

COURSES

1. **B.A. Honours Course (six semesters) under CBCS :**
(i) Bengali (ii) English (iii) Political Science (iv) Philosophy (v) History (vi) Economics (vii) Sanskrit (viii) Geography (ix) Education (x) Social Work.
2. **B.Com Honours Course (six semesters) under CBCS :**
(i) B.Com. Honours
3. **B.Sc. Honours Course (six semesters) under CBCS :**
(i) Botany (ii) Zoology (iii) Mathematics (iv) Physics (v) Chemistry (vi) Computer Science.
4. **B.A. Programme Course (six semesters) under CBCS :**
(i) Bengali (ii) English (iii) Political Science (iv) Philosophy (v) History (vi) Economics (vii) Sanskrit (viii) Geography (ix) Education (x) Physical Education.
5. **B.Sc. Programme Course (six semesters) under CBCS :**
Pure Science :- Mathematics, Physics, Chemistry.
Bio-Science :- Botany, Zoology, Chemistry.
6. **B.Com. Programme Course (six semesters) under CBCS :**
B.Com. Programme

Hons. and Programme courses run as per guideline of Bankura University. Admitted students will complete course in six semesters through *Choice Based Credit System* (CBCS). Details may be known from the College Office/ Bankura University Website : www.bankurauniversity.ac.in Syllabus module can be downloaded from College website/ Bankura University Website : www.bankurauniversity.ac.in .

N.B.- Every student will have to take admission before 1st, 3rd and 5th semester separately.

Always protest against ragging

DIVISION OF MARKS
SCIENCE HONOURS COURSE- FULL MARKS

Semester	Course Code	Course Type	F.M.	Total
<u>I</u>	SH/SUB/ 101/C-1	Core Course - 1	50	200
	SH/SUB/ 102/C- 2	Core Course - 2	50	
	SH/SUB/ 103/GE-1	Generic Elective Course – 1	50	
	ACSHP/104/ AECC-ENVS	AECC-1 Environmental Study	50	
<u>II</u>	SH/SUB/ 201/C-3	Core Course 3	50	200
	SH/SUB/ 202/C-4	Core Course 4	50	
	SH/SUB/ 203/GE-2	Generic Elective Course – 2	50	
	ACSHP/204/ AECC-E/MIL	AECC-2	50	
<u>III</u>	SH/SUB/ 301/C-5	Core Course - 5,	50	250
	SH/SUB/ 302/ C-6	Core Course,-6	50	
	SH/SUB/ 303/C-7	Core Course - 7	50	
	SH/SUB/ 304/GE-3	Generic Elective Course – 3	50	
	SH/SUB/ 305/SEC-1	SEC-1(Choicable)	50	
<u>IV</u>	SH/SUB/ 401/C-8	Core Course - 8	50	250
	SH/SUB/ 402/C-9	Core Course - 9	50	
	SH/SUB/ 403/C-10	Core Course8,-10	50	
	SH/SUB/ 404/GE-4	Generic Elective Course – 4	50	
	SH/SUB/ 405/SEC-2	(SEC-2) (Choicable)	50	
<u>V</u>	SH/SUB/ 501/C-11	Core Course - 11	50	200
	SH/SUB/ 502/C-12	Core Course - 12	50	
	SH/SUB/ 503/DSE-1	DSE-1(Choicable)	50	
	SH/SUB/ 504/DSE-2	DSE-2(Choicable)	50	
<u>VI</u>	SH/SUB/ 601/C-13	Core Course 13	50	200
	SH/SUB/ 602/C-14	Core Course - 14	50	
	SH/SUB/ 603/DSE-3	DSE-3(Choicable)	50	
	SH/SUB/ 604/DSE-4	DSE-4(Choicable)	50	
		Total=		1300

SH= Science Honours, SUB= Subjects(Specific), C= Core Course, AECC= Ability Enhancement
Compulsory Course, SEC= Skill Enhancement Course, GE= Generic Elective, DSE= Discipline Specific Elective



Republic Day Celebration 2021

DIVISION OF MARKS

ARTS HONOURS COURSE- FULL MARKS

<i>Semester</i>	<i>Course Code</i>	<i>Course Type</i>	<i>F.M.</i>	<i>Total</i>
<u>I</u>	AH/SUB/ 101/C-1	Core Course - 1	50	200
	AH/SUB/ 102/C- 2	Core Course - 2	50	
	AH/SUB/ 103/GE-1	Generic Elective Course – 1	50	
	ACSH/104/ AECC-ENV	AECC-1 Environmental Study	50	
<u>II</u>	AH/SUB/ 201/C-3	Core Course 3	50	200
	AH/SUB/ 202/C-4	Core Course 4	50	
	AH/SUB/ 203/GE-2	Generic Elective Course – 2	50	
	ACSH/204/ AECC-E/MIL	AECC -2	50	
<u>III</u>	AH/SUB/ 301/C-5	Core Course - 5,	50	250
	AH/SUB/ 302/ C-6	Core Course,-6	50	
	AH/SUB/ 303/C-7	Core Course - 7	50	
	AH/SUB/ 304/GE-3	Generic Elective Course – 3	50	
	AH/SUB/ 305/SEC-1	SEC-1(Choicable)	50	
<u>IV</u>	AH/SUB/ 401/C-8	Core Course - 8	50	250
	AH/SUB/ 402/C-9	Core Course - 9	50	
	AH/SUB/ 403/C-10	Core Course8,-10	50	
	AH/SUB/ 404/GE-4	Generic Elective Course – 4	50	
	AH/SUB/ 405/SEC-2	(SEC-2) (Choicable)	50	
<u>V</u>	AH/SUB/ 501/C-11	Core Course - 11	50	200
	AH/SUB/ 502/C-12	Core Course - 12	50	
	AH/SUB/ 503/DSE-1	DSE-1(Choicable)	50	
	AH/SUB/ 504/DSE-2	DSE-2(Choicable)	50	
<u>VI</u>	AH/SUB/ 601/C-13	Core Course 13	50	200
	AH/SUB/ 602/C-14	Core Course - 14	50	
	AH/SUB/ 603/DSE-3	DSE-3(Choicable)	50	
	AH/SUB/ 604/DSE-4	DSE-4(Choicable)	50	
		<i>Total=</i>		<i>1300</i>

AH= Arts Honours, SUB= Subjects(Specific), C= Core Course,
AECC= Ability Enhancement Compulsory Course, SEC= Skill Enhancement Course,
GE= Generic Elective, DSE= Discipline Specific Elective

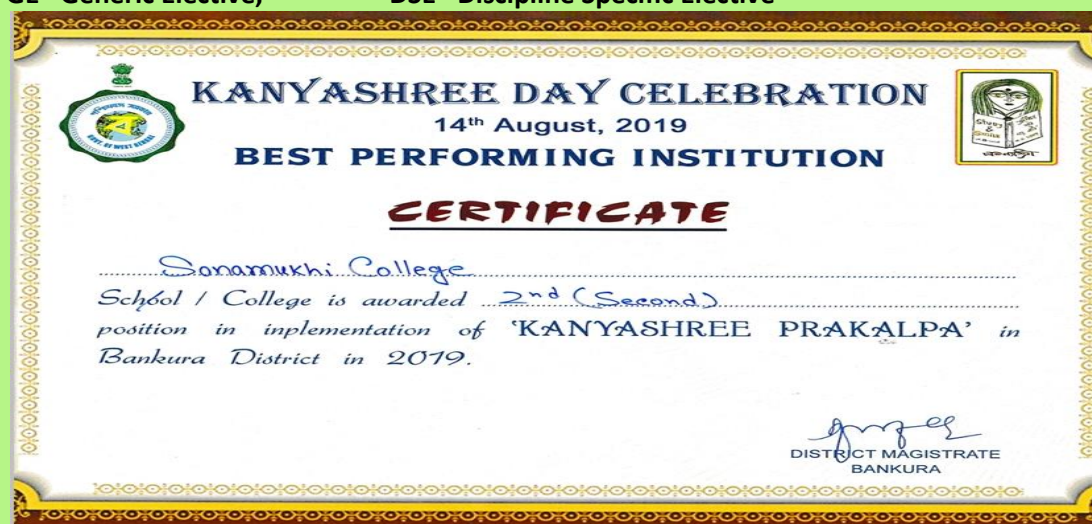


DIVISION OF MARKS

COMMERCE HONOURS COURSE- FULL MARKS

Semester	Course Code	Course Type	F.M.	Total
<u>I</u>	CH/SUB/ 101/C-1	Core Course - 1	50	200
	CH/SUB/ 102/C- 2	Core Course - 2	50	
	CH/SUB/ 103/GE-1	Generic Elective Course – 1	50	
	ACSHP/104/ AECC-ENVS	AECC-1 Environmental Study	50	
<u>II</u>	CH/SUB/ 201/C-3	Core Course 3	50	200
	CH/SUB/ 202/C-4	Core Course 4	50	
	CH/SUB/ 203/GE-2	Generic Elective Course – 2	50	
	ACSHP/204/ AECC-E/MIL	AECC-2	50	
<u>III</u>	CH/SUB/ 301/C-5	Core Course - 5,	50	250
	CH/SUB/ 302/ C-6	Core Course,-6	50	
	CH/SUB/ 303/C-7	Core Course - 7	50	
	CH/SUB/ 304/GE-3	Generic Elective Course – 3	50	
	CH/SUB/ 305/SEC-1	SEC-1(Choicable)	50	
<u>IV</u>	CH/SUB/ 401/C-8	Core Course - 8	50	250
	CH/SUB/ 402/C-9	Core Course - 9	50	
	CH/SUB/ 403/C-10	Core Course8,-10	50	
	CH/SUB/ 404/GE-4	Generic Elective Course – 4	50	
	CH/SUB/ 405/SEC-2	SEC-2 (Choicable)	50	
<u>V</u>	CH/SUB/ 501/C-11	Core Course - 11	50	200
	CH/SUB/ 502/C-12	Core Course - 12	50	
	CH/SUB/ 503/DSE-1	DSE-1(Choicable)	50	
	CH/SUB/ 504/DSE-2	DSE-2(Choicable)	50	
<u>VI</u>	CH/SUB/ 601/C-13	Core Course 13	50	200
	CH/SUB/ 602/C-14	Core Course - 14	50	
	CH/SUB/ 603/DSE-3	DSE-3(Choicable)	50	
	CH/SUB/ 604/DSE-4	DSE-4(Choicable)	50	
		Total=		1300

CH= Commerce Honours, SUB= Subjects(Specific), C= Core Course,
 AECC= Ability Enhancement Compulsory Course, SEC= Skill Enhancement Course,
 GE= Generic Elective, DSE= Discipline Specific Elective



ABBREVIATIONS OF PAPERS SUBJECTS ETC. IN PROGRAMME COURSES AS PER BANKURA UNIVERSITY

SP= Science Programme, AP= Arts Programme, CP= Commerce Programme,
SUB = Subject (Specific), C= Core Course,
E/H/MIL= English/ Hindi/ Modern Indian Language,
H/MIL/E= Hindi/ Modern Indian Language/ English,
AECC-E= Ability Enhancement Compulsory Course-English,
AECC-ENV= Ability Enhancement Compulsory Course-Environmental Science,
SEC= Skill Enhancement Course, DSE= Discipline Specific Elective.

B.Sc. Programme course structure : Full Marks

<i>Semester</i>	<i>Course Code</i>	<i>Programme/ Gen. Course</i>	<i>F.M.</i>	<i>Total</i>
<u>I</u>	SP/SUB/101/C-1A	Programme Sub. : Discipline-1	50	200
	SP/SUB /102/ C-2A	Discipline-2	50	
	SP/SUB /103/C-3A	Discipline-3	50	
	ACSHP/ 104/ AECC-ENVS	Environmental Studies	50	
<u>II</u>	SP/SUB /201/C-1B	Programme Sub. : Discipline-1	50	
	SP/SUB /202/ C-2B	Discipline - 2	50	
	SP/SUB / 203/C- 3B	Discipline - 3	50	
	ACSHP/204/ AECC-E/MIL	English/MIL	50	
<u>III</u>	SP/SUB / 301/C-1C	Programme Sub. : Discipline-1	50	200
	SP/SUB /302/C-2C	Discipline - 2	50	
	SP/SUB / 303/ C-3C	Discipline - 3	50	
	SP/SUB /304/ SEC-1	Choice according to Programme sub.	50	
<u>IV</u>	SP/SUB /S.C./401/C-1D	Programme Sub. : Discipline-1	50	200
	SP/SUB / 402/ C-2D	Discipline-2	50	
	SP/SUB / 403/ C-3D	Discipline-3	50	
	SP/SUB /404/ SEC-2	Choice according to Programme sub.	50	
<u>V</u>	SP/SUB /501/DSE-1A	Programme Sub. : Discipline-1	50	200
	SP/SUB / 502/DSE-2A	Discipline - 2	50	
	SP/SUB / 503/DSE-3A	Discipline - 3	50	
	SP/SUB /504/SEC-3	Choice according to Programme sub.	50	
<u>VI</u>	SP/SUB /601/DSE-1B	Programme Sub. : Discipline-1	50	200
	SP/SUB / 602/DSE-2B	Discipline - 2	50	
	SP/SUB / 603/DSE-3B	Discipline - 3	50	
	SP/SUB./ 604/SEC-4	Choice according to Programme sub.	50	
	<i>Total=</i>			1200

Programme Subject OR the concerned Department will remain unchanged during 6 Semesters.

For Pure Science Programme subject : Physics/Chemistry/Mathematics (any one)

For Bio-Science Programme : Botany/Zoology/Chemistry (any one)

Arts Programme course structure : Full Marks

<i>Semester</i>	<i>Course Code</i>	<i>Programme/ Gen. Course</i>	<i>F.M.</i>	<i>Total</i>
<u>I</u>	AP/SUB/101/C-1A	Programme Sub. : Discipline-1	50	200
	AP/SUB /102/ C-2A	Discipline-2	50	
	AP/SUB /103/ C-3A	Discipline-3	50	
	ACSHP/ 104/ AECC-ENV	Environmental Studies	50	
<u>II</u>	AP/SUB /201/C-1B	Programme Sub. : Discipline-1	50	
	AP/SUB /202/ C-2B	Discipline - 2	50	
	AP/SUB / 203/C- 3B	Discipline - 3	50	
	ACSHP/204/ AECC-E/MIL	English/MIL	50	
<u>III</u>	AP/SUB / 301/C-1C	Programme Sub. : Discipline-1	50	200
	AP/SUB /302/C-2C	Discipline - 2	50	
	AP/SUB / 303/ C-3C	Discipline - 3	50	
	AP/SUB /304/ SEC-1	Choice according to Programme sub.	50	
<u>IV</u>	AP/SUB /S.C./401/C-1D	Programme Sub. : Discipline-1	50	200
	AP/SUB / 402/ C-2D	Discipline-2	50	
	AP/SUB / 403/ C-3D	Discipline-3	50	
	AP/SUB /404/ SEC-2	Choice according to Programme sub.	50	
<u>V</u>	AP/SUB /501/DSE-1A	Programme Sub. : Discipline-1	50	200
	AP/SUB / 502/DSE-2A	Discipline - 2	50	
	AP/SUB / 503/DSE-3A	Discipline - 3	50	
	AP/SUB /504/SEC-3	Choice according to Programme sub.	50	
<u>VI</u>	AP/SUB /601/DSE-1B	Programme Sub. : Discipline-1	50	200
	AP/SUB / 602/DSE-2B	Discipline - 2	50	
	AP/SUB / 603/DSE-3B	Discipline - 3	50	
	AP/SUB./ 604/SEC-4	Choice according to Programme sub.	50	
	<i>Total=</i>			1200

Programme Subject OR the concerned Department will remain unchanged during 6 Semesters.



PROTEST AGAINST RAGGING IS DUTY OF RESPONSIBLE CITIZEN.

B.Com. Programme course structure : Full Marks

<i>Semester</i>	<i>Course Code</i>	<i>Programme/ Gen. Course</i>	<i>F.M.</i>	<i>Total</i>
<u>I</u>	CP/SUB/101/C-1A	Discipline-1	50	200
	CP/SUB /102/ C-2A	Discipline-2	50	
	CP/SUB /103/ C-3A	Discipline-3	50	
	ACSHP/ 104/ AECC-ENV	Environmental Studies	50	
<u>II</u>	CP/SUB /201/C-1B	Discipline-1	50	
	CP/SUB /202/ C-2B	Discipline - 2	50	
	CP/SUB / 203/C- 3B	Discipline - 3	50	
	ACSHP/204/ AECC-E/MIL	English/MIL	50	
<u>III</u>	CP/SUB / 301/C-1C	Discipline-1	50	200
	CP/SUB /302/C-2C	Discipline - 2	50	
	CP/SUB / 303/ C-3C	Discipline - 3	50	
	CP/SUB /304/ SEC-1	According to Programme sub.	50	
<u>IV</u>	CP/SUB /S.C./401/C-1D	Discipline-1	50	200
	CP/SUB / 402/ C-2D	Discipline-2	50	
	CP/SUB / 403/ C-3D	Discipline-3	50	
	CP/SUB /404/ SEC-2	According to Programme sub.	50	
<u>V</u>	CP/SUB /501/DSE-1A	Discipline-1	50	200
	CP/SUB / 502/DSE-2A	Discipline - 2	50	
	CP/SUB / 503/DSE-3A	Discipline - 3	50	
	CP/SUB /504/SEC-3	According to Programme sub.	50	
<u>VI</u>	CP/SUB /601/DSE-1B	Discipline-1	50	200
	CP/SUB / 602/DSE-2B	Discipline - 2	50	
	CP/SUB / 603/DSE-3B	Discipline - 3	50	
	CP/SUB./ 604/SEC-4	According to Programme sub.	50	
	<i>Total=</i>			1200



विद्यां ददाति विनयं

NUMBERS OF SEATS : (including SC/ST/OBC-A/OBC-B/PWD Seats)

Honours & Programme Course

Session (2021-22)						
Subject	UR	SC(22%)	ST(6%)	OBC-A (10%)	OBC-B (7%)	Total
<i>Bengali(H)</i>	53	21	6	10	7	97
<i>English(H)</i>	53	21	6	10	7	97
<i>Sanskrit(H)</i>	39	15	4	7	5	70
<i>History(H)</i>	50	20	5	9	6	90
<i>Pol. Sc.(H)</i>	28	11	3	5	4	51
<i>Economics(H)</i>	06	2	1	1	1	11
<i>Philosophy(H)</i>	43	18	5	8	6	80
<i>Geography(H)</i>	24	10	3	5	3	45
<i>Education(H)</i>	24	10	3	5	3	45
<i>Social Work(H)</i>	22	9	2	4	3	40
<i>Physics(H)</i>	16	7	2	3	2	30
<i>Chemistry(H)</i>	12	6	2	3	2	25
<i>Mathematics(H)</i>	35	14	4	7	5	65
<i>Zoology(H)</i>	19	8	2	4	2	35
<i>Botany(H)</i>	16	7	2	3	2	30
<i>Comp. Sc. (H)</i>	16	7	2	3	2	30
<i>Accountancy(H)</i>	09	4	1	2	1	17
<i>Arts Programme**</i>	389	156	42	71	49	707
<i>Sc. Programme (Pure & Bio)</i>	55	22	6	10	7	100
<i>Commerce Programme</i>	12	5	1	2	1	21

Seats of PWD Students – as per Bankura University and WB Govt. rules for each category in all subjects.

**** -Subject wise total seats for Arts Programme Course are as follows: Bengali Prog.- 130; Education Prog.-130; Philosophy Prog.-130; History Prog.-80; Pol. Sc. Prog.-40; Sanskrit Prog.-50; Geography Prog.-20; English Prog.-20; Economics Prog.-10; Physical Education Prog.-97 .**

Reservation of seats may change depending on the direction from DPI, WB Govt./BKU from time to time.

Notification shall be available in college website as and when instructed by BKU/DPI.



DISCIPLINE

- a) Classes are to be attended regularly and punctually. At least 75% attendance in classes (both Theoretical and Practical) is a must.
- b) Discipline is to be observed in and outside the classroom to maintain a healthy teaching-learning atmosphere.
- c) Students should be obedient and humble to the teachers and the staff of the college.
- d) Students have to participate in all cultural functions, sports and games, N.C.C., N.S.S. developmental social services, conducted by the college.
- e) Appearing at Class/Unit-Test/Internal assessment is mandatory. **Students must have to appear at Internal Assessment in each paper before Semester Examination otherwise they won't be able to appear in the Semester Examinations conducted by the University.**
- f) Students should carefully observe all rules, orders and measures, issued to them from time to time. They are advised to check College website regularly.
- g) Students should pay their fees in online process.



Always Protest Against Ragging.

ADMISSION PROCEDURE :

Registration for online application is required for Honours (maximum four options) and Programme (Arts/Science/Commerce – maximum two options) courses.

Group distribution of Arts Subjects considering the thought of all round development of a student :: If Honours subject is selected from one group then Generic Elective (GE) subject will be available to opt from other two groups. For B.A. Programme Courses
Any two papers from same group will not be available to opt.

Group 1	Group 2	Group 3
BENGALI	PHILOSOPHY	HISTORY
ENGLISH	EDUCATION	POL. SC.
SANSKRIT	Economics	GEOGRAPHY* : For Honours & Programme course only
SOCIAL WORK* : Only for Honours course	Physical Education* : Only for Programme course	



Common information to applicants :

- (i) Reservation including PWD to various courses will be maintained as per Govt. rules and will be automatically done by the software itself.
- (ii) Merit-list for the admission to First semester course during 2021-22 Academic Year will be prepared according to Aggregate Marks of best five subjects as stated in the para of 'Merit list generation'. The calculation of Aggregate Marks will be done by the software itself on the basis of the decision taken by Sonamukhi College admission committee keeping in mind the Bankura University circular(prevaling) for admission.
- (iii) The eligibility criteria for admission to various courses in First semester 2021-22 are given in 'Subject Selection' Para below. Aggregate Means Sum of best 5 marks, out of marks in all Subjects. For Others boards like ICSE, CBSE etc.- if Bengali is not available, English will be considered twice. No mark will be deducted for applicants passed 10+2 level in previous years.
- (iv) Students seeking admission to the B.A. and B.Com. Programme Courses should have minimum pass marks. For B.Sc. Pure & Bio (in case of practical based subject, 40% Marks in concerned subject(s) of 10+2 level is necessary).
- (v) Seat capacity and fees structure : available in page 16 & 24.
- (vi) Mode of payments relating to Admission process –
Through Payment gateway. It will appear at the time of fees deposit.
Online Payment Gateway (PAYUMoney) : Auto re-directed & generated.
- (vii) Upload the own photograph & Signature, 10th Admit & Mark sheet, 12th Mark sheet, 10+2 Level Registration certificate, Caste certificate & PWD certificate(if applicable). No change shall be possible in future after final submission for registration.
- (viii) Always download hard and soft copy of application fees deposit, Application form and admission fees deposit (if any). These will be auto generated.
- (ix) During registration process, students have to put their mobile number and email. Mobile no and email will be used by the college as well as by the University for communication purpose in future.

Students are directed to provide **permanent mobile no and email for present & future.**

WHATSAPP NUMBER IS COMPULSORY FOR SUBJECT-WISE AND DEPARTMENTAL GROUP



Fees for Registration of Online Application for Admission :

There will be no registration fees for the on-line admission procedure.

Registration of Application :

Students who have passed H.S. Exam. in 2019, 2020 and 2021 may apply online for Admission. The link for registration is available in the college website home page. E-prospectus regarding admission is available in the college website www.sonamukhicollegebankura.com.

Permanent mobile number and **email id** of applicant are necessary to fill up online application form for password confirmation.

After registration for online application an 'Application registration fees deposit option will be available for ONLINE PAYMENT.

Final confirmation of online application is possible after CHECKING of bank payment **detail** of application fee by the college.

Activation of finally submitted online application will be done AUTOMATICALLY for merit list generation.

An applicant may **apply in maximum three Honours subjects** irrespective of faculty(science/Arts/Commerce) and maximum two Programme courses on the same online application form, if the candidate selects both option of Hons. & Programme.

Applicants of H.S. or equivalent Vocational courses are eligible for B.A. Programme courses only.

Choice of Physical Education will be final after fitness test by the Dept.

The candidature shall be cancelled at any time for false entry of number for H.S. (10+2) subjects in online admission. No fees refund shall be done in any situation. So, all applicants are directed to check everything before final submission & Payment(s).

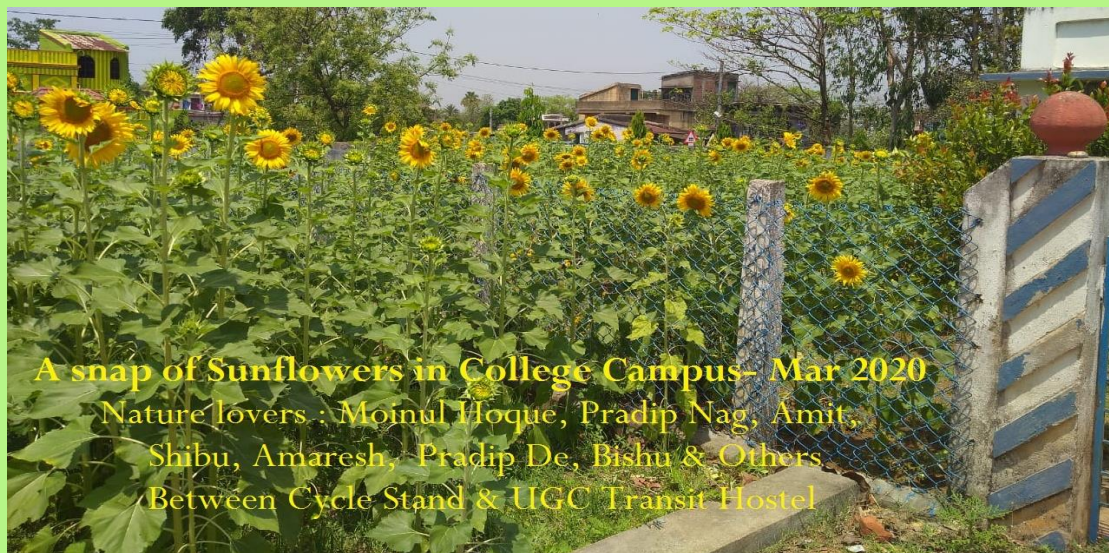
An applicant, after admission, will get chance of change for two times irrespective of course. e.g. If anybody takes admission in Programme or Hons. course, he/she will get chance of transfer two times after it provided his/her name in name confirmed rank. **chances of transfer = Two times maximum.**

For Example see below,

First admission : then transfer to another course :: then a chance again to transfer.

Don't ask for Honours or Programme :: Arts or Scince or Commeree. All are of same status.

(as per confirmed cases in merit list)



A snap of Sunflowers in College Campus- Mar 2020
Nature lovers : Moinul Hoque, Pradip Nag, Amit,
Shibu, Amaresh, Pradip De, Bishu & Others
Between Cycle Stand & UGC Transit Hostel

PROTEST AGAINST RAGGING IS DUTY OF RESPOSIBLE CITIZEN.

Subject selection : i) B.A., B.Sc., B.Com Honours Courses:

Admission to different Honours Courses (B.A., B.Sc., B.Com.) and according to the CBCS course structure of the Bankura University, various options available for the Generic Elective (GE) subject against Honours Courses are given in the following table.

Sl. No.	CRITERIA FOR ADMISSION IN HONOURS			HONOURS COURSE STRUCTURE - 1ST SEMESTER			
	Honours subjects	Base subject (must be in 10+2)	Eligibility Criteria (For more than 1 base subject highest will be considered)	Paper-1	Paper-2	Paper-3: GE (choose only one)	Paper-4 : AECC-1 Compulsory
1	B. Com(H)	Accountancy / Mathematics	45% in Aggregate & 45% in Base subject	Hons. Paper C-1	Hons. Paper C-2	Commerce - GE	ENVS
2	<u>BENGALI</u>	<u>Bengali</u>	<u>45% in Aggregate & 45% in Base subject</u>	<u>Hons. Paper C-1</u>	<u>Hons. Paper C-2</u>	<u>Economics, Philosophy, Pol. Sc., History, Education</u>	<u>ENVS</u>
3	BOTANY	Biological Science	45% in Aggregate & 60% in Base subject	Hons. Paper C-1	Hons. Paper C-2	Zoology, Chemistry, Physics, Mathematics, Economics	ENVS
4	<u>CHEMISTRY</u>	<u>Chemistry</u>	<u>45% in Aggregate & 60% in Base subject</u>	<u>Hons. Paper C-1</u>	<u>Hons. Paper C-2</u>	<u>Botany, Zoology, Physics, Mathematics, Economics</u>	<u>ENVS</u>
5	COMP. SC.	Mathematics	45% in Aggregate & 45% in Base subject	Hons. Paper C-1	Hons. Paper C-2	Botany, Zoology, Chemistry, Physics, Mathematics, Economics	ENVS
6	<u>ECONOMICS</u>	<u>Mathematics</u>	<u>45% in Aggregate & 45% in Base subject</u>	<u>Hons. Paper C-1</u>	<u>Hons. Paper C-2</u>	<u>History, Pol. Sc., Bengali, English, Sanskrit, Mathematics</u>	<u>ENVS</u>
7	EDUCATION	Education/Bengali/English	45% in Aggregate & 45% in Base subject	Hons. Paper C-1	Hons. Paper C-2	History, Pol. Sc., Bengali, English, Sanskrit	ENVS
8	<u>ENGLISH</u>	<u>English</u>	<u>45% in Aggregate & 45% in Base subject</u>	<u>Hons. Paper C-1</u>	<u>Hons. Paper C-2</u>	<u>Economics, Philosophy, Pol. Sc., History, Education</u>	<u>ENVS</u>
9	GEOGRAPHY	Geography or Mathematics	45% in Aggregate & (60% in Geogra. or 45% in Base subject)	Hons. Paper C-1	Hons. Paper C-2	Mathematics, Economics, Philosophy, Education, Bengali, English, Sanskrit	ENVS
10	<u>HISTORY</u>	<u>History/ Bengali/ English</u>	<u>45% in Aggregate & 45% in Base subject</u>	<u>Hons. Paper C-1</u>	<u>Hons. Paper C-2</u>	<u>Economics, Philosophy, Education, Bengali, English, Sanskrit</u>	<u>ENVS</u>
11	MATHEMATICS	Mathematics	45% in Aggregate & 45% in Base subject	Hons. Paper C-1	Hons. Paper C-2	Botany, Zoology, Chemistry, Physics, Economics	ENVS
12	<u>PHILOSOPHY</u>	<u>Philosophy/ Bengali / English</u>	<u>45% in Aggregate & 45% in Base subject</u>	<u>Hons. Paper C-1</u>	<u>Hons. Paper C-2</u>	<u>History, Pol. Sc., Bengali, English, Sanskrit</u>	<u>ENVS</u>
13	PHYSICS	Physics	45% in Aggregate & 60% in Base subject	Hons. Paper C-1	Hons. Paper C-2	Botany, Zoology, Chemistry, Mathematics, Economics	ENVS
14	<u>POL. SC.</u>	<u>Pol. Sc. / Bengali / English</u>	<u>45% in Aggregate & 45% in Base subject</u>	<u>Hons. Paper C-1</u>	<u>Hons. Paper C-2</u>	<u>Philosophy, Education, Bengali, English, Sanskrit</u>	<u>ENVS</u>
15	SANSKRIT	Sanskrit / Bengali / English	45% in Aggregate & 45% in Base subject	Hons. Paper C-1	Hons. Paper C-2	Economics, Philosophy, Pol. Sc., History, Education	ENVS
16	<u>SOCIAL WORK</u>	<u>Bengali / English</u>	<u>45% in Aggregate & 45% in Base subject</u>	<u>Hons. Paper C-1</u>	<u>Hons. Paper C-2</u>	<u>Economics, English, Philosophy, Pol. Sc., History, Education</u>	<u>ENVS</u>
17	ZOOLOGY	Biological Science	45% in Aggregate & 60% in Base subject	Hons. Paper C-1	Hons. Paper C-2	Botany, Chemistry, Physics, Mathematics, Economics	ENVS

Aggregate means total of best 5 for WBCHSE or equivalent. For CBSE & equivalent :: 4+ English repeat.

Arts & Science :: 1st & 2nd SEM : same GE subject. 3rd & 4th SEM : Option for another GE subject, if applied for. For Commerce : No option for change in GE.



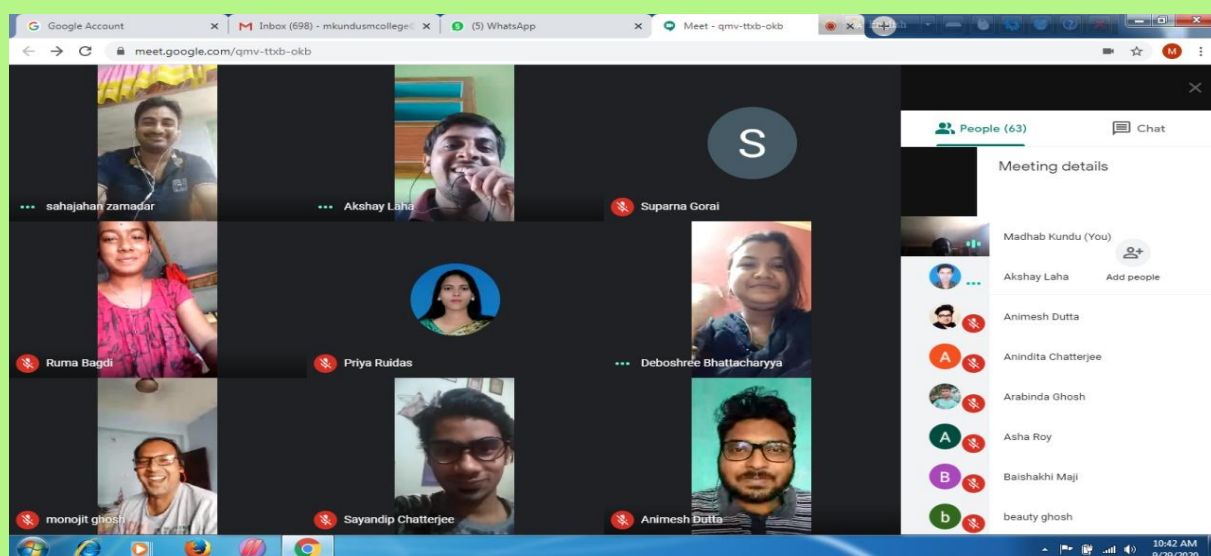
ii) B.A. Programme Courses:

Admission to different B.A. Programme Courses and according to the CBCS course structure of the Bankura University, various options available for the Discipline-2 paper and MIL paper are given in the following table.

Sl. No.	Degree offered	Eligibility Criteria	Paper-1 : Disc. 1 Programme Subject	Paper-2 : Disc. 2 select one Subject	Paper -3 : Disc 3 MIL	Paper-4 AECC
1	B.A. Programme in Bengali	30% in aggregate at 10+2 level	Bengali	Pol.Sc., History, Education, Philosophy, Economics	Sanskrit	ENVS
2	B.A. Programme in Economics	30% in aggregate at 10+2 level	Economics	Bengali, English, Sanskrit, History, Pol. Sc.	Bengali/ Sanskrit	ENVS
3	B.A. Programme in Education	30% in aggregate at 10+2 level	Education	Bengali, English, Sanskrit, History, Pol. Sc.	Bengali/ Sanskrit	ENVS
4	B.A. Programme in English	30% in aggregate at 10+2 level	English	Pol.Sc., History, Education, Philosophy, Economics	Bengali/ Sanskrit	ENVS
5	B.A. Programme in Geography	30% in aggregate at 10+2 level	Geography	Bengali, English, Sanskrit, Philosophy, Education,	Bengali/ Sanskrit	ENVS
6	B.A. Programme in History	30% in aggregate at 10+2 level	History	Bengali, English, Sanskrit, Philosophy, Education,	Bengali/ Sanskrit	ENVS
7	B.A. Programme in Philosophy	30% in aggregate at 10+2 level	Philosophy	Bengali, English, Sanskrit, History, Pol. Sc.	Bengali/ Sanskrit	ENVS
8	B.A. Programme in Pol. Sc.	30% in aggregate at 10+2 level	Pol. Sc.	Bengali, English, Sanskrit, Philosophy, Education,	Bengali/ Sanskrit	ENVS
9	B.A. Programme in Sanskrit	30% in aggregate at 10+2 level	Sanskrit	Pol.Sc., History, Education, Philosophy, Economics	Bengali	ENVS
10	B.A. Programme in Phy. Edu.	30% in aggregate at 10+2 level	Physical Education	Bengali, English, Sanskrit, History, Pol. Sc.	Bengali/ Sanskrit	ENVS

If Paper 2 selection is Bengali then MIL will be Sanskrit or vice versa.

No two papers will be available from same department.



ii) B.Com. Programme Courses:

Admission to B. Com. Programme Course and according to the CBCS course structure of the Bankura University, various options available for the Discipline-2 paper and MIL paper are given in the following table.

Admission Criteria for B.Com. Programme Course and Course Structure (Paper 1,2,3 shall not be same)						
Sl. No.	Degree offered	Eligibility criteria	Paper-1 : Disci-1 Programme subject	Paper-2 : Discipline-2	Paper-3 : Discipline-3 MIL	Paper-4 : AECC
1	B.Com Programme	30% in aggregate at 10+2 Science or Commerce	101-C-1A- Management Theo.	101-C-2A - Indian Economic Problem	Bengali/Sanskrit	ENVS

iii) B.Sc. Programme Courses:

Admission to different B.Sc. Programme (Pure and Bio) Courses and according to the CBCS course structure of the Bankura University, various options available for the Discipline-2 paper and Discipline-3 paper are given in the following table.

Admission Criteria for B.SC.(Pure), Programme Course and Course Structure(Paper 1,2,3 shall not be same)						
Sl. No.	Degree offered	Eligibility criteria	Paper-1 : Disci.-1 Programme subject	Paper-2 : Discipline -2	Paper-3 : Discipline-3	Paper-4 : AECC
1	B.Sc. Programme in Physics	30% in aggregate at 10+2 Science with Math	Physics	Chemistry	Mathematics	Environmental Studies
2	B.Sc. Programme in Chemistry	30% in aggregate at 10+2 Science with Math	Chemistry	Physics	Mathematics	Environmental Studies
3	B.Sc. Programme in Mathematics	30% in aggregate at 10+2 Science with Math	Mathematics	Chemistry	Physics	Environmental Studies

Aggregate Means Sum of best 5 marks, out of marks in all Subjects. For Others boards like ISC, CBSE etc.- If Bengali is not available, English will be considered as twice.

Admission Criteria for B.SC.(Bio), Programme Course and Course Structure (Paper 1,2,3 shall not be same)						
Sl. No.	Degree offered	Eligibility criteria	Paper-1 : Disci.-1 Programme subject	Paper-2 : Discipline -2	Paper-3 : Discipline-3	Paper-4 : AECC
1	B.Sc. Programme in Botany	30% in aggregate at 10+2 Science with Biology	Botany	Zoology	Chemistry	Environmental Studies
2	B.Sc. Programme in Zoology	30% in aggregate at 10+2 Science with Biology	Zoology	Botany	Chemistry	Environmental Studies

Aggregate Means Sum of best 5 marks, out of marks in all Subjects. For Others boards like ISC, CBSE etc.- If Bengali is not available, English will be considered as twice.

Note for students from Vocational Course:

Students who have passed Vocational Engineering and Technology (with pass marks in Mathematics) equivalent to 10+2 are eligible for admission to Pure Science Programme Course. Students who have passed Vocational Agriculture equivalent to 10+2 are eligible for admission to Bio Science Programme Course. Students who have passed Vocational Business and Commerce equivalent to 10+2 are eligible for admission to Accountancy Honours Course.

C) Details of Merit list Generation : Honours Courses

Subject wise including category wise merit list(s) will be published in the college online admission website on stipulated date & time. An SMS and email will be sent to the applicant's mobile and email id. After receiving SMS, applicant has to choose one Honours subject (if the name of applicant appears in merit list of more than one subject) for acceptance in online admission process within the stipulated date and time. If an applicant select one subject through online process his/her name (if appears in merit list of other subjects) will be automatically removed from other Honours subject(s).

Merit list will be auto generated depending on the seat capacity of subjects/faculty in the following process and SMS alert including email will be sent automatically to applicants those who are confirmed at least in one course :

Marks for MERIT List : Honours course

Mark(%) of best 5 (WBCHSE/High Madrasa – Gen & Vocational)/ English twice (for ICSE, CBSE & others) & 100% of the highest among the concerned base subject(s) available in the above table. An applicant can opt maximum three Honours subjects in online application for admission process 2021-22 as per 'The Bankura University' rules & regulations for admission to 3 year Degree course.

SMS will be delivered to confirmed candidates in merit list only.

Programme courses

Separate Merit lists for Programme courses in Science (bio), Science (Pure), Arts and commerce will be published on the basis of aggregates (Best five subjects in 10+2 level of WBCHSE and English twice for ICSE, CBSE etc.) in the College website on scheduled dates and time. An SMS and email will be sent to the applicant's mobile and email id, if confirmed in list. No SMS for wait listed.

Geography and Physical Education will be offered only as main subject or Programme subject.

DATES & TIME :: merit list publication

PROGRAMME SCHEDULE OF ON-LINE ADMISSION-2021-22

Phases	Period (including online payment)		
Registration for Admission	02/08/2021 (within 11:00 A.M.)	to	20/08/2021 , 10:00 P.M.
Provisional merit list	On 24/08/2021 (after 11:30 A.M.)		
Intimation of complain against the merit list (if any) through help-desk	24/08/2021 (after 2:00 P.M.)	to	28/08/2021 , 2:00 P.M.
Final merit list	On 31/08/2021 (after 11:30 A.M.)		
1st merit list	01/09/2021 (after 6:00 A.M.)	to	02/09/2021 , 10:00 P.M.
2nd merit list	03/09/2021 (after 2:00 P.M.)	to	05/09/2021 , 10:00 P.M.
3rd merit list	06/09/2021 (after 2:00 P.M.)	to	08/09/2021 , 10:00 P.M.
4th merit list	09/09/2021 (after 2:00 P.M.)	to	11/09/2021 , 10:00 P.M.
5th merit list	12/09/2021 (after 2:00 P.M.)	to	14/09/2021 , 10:00 P.M.
6th merit list	15/09/2021 (after 2:00 P.M.)	to	19/09/2021 , 10:00 P.M.
7th merit list	20/09/2021 (after 2:00 P.M.)	to	22/09/2021 , 10:00 P.M.

1. No request regarding correction in HS (10+2) marks will be entertained.
2. Merit list for Programme Courses will be published from the 6th phase (i.e 15/09/2021 onwards).
3. 2nd and onwards merit lists are applicable subjected to the availability of subject wise and category wise vacant seats (if any).
4. Merit lists after 7th phase may be published depending on the subject wise and category wise vacancies.
5. The above schedule may change due to any technical problem or any order issued by the Bankura University or Govt. of West Bengal.

d) Admission : All admissions to this Sonamukhi College are provisional. All admissions will be final after the completion of Registration process by The Bankura University. Admission shall be cancelled for any mistake or suppression of facts. The College authority reserves the right to withdraw any notice and issue of fresh notice if any notice issued regarding admission is made inadvertently.

College authority will never be responsible for SMS/email to applicant. The applicants are directed to check college online website for their own interest.

At the time of application for registration and selecting for Honours and/or Programme subject, a student shall have to upload following documents-

- a. Admit Card of Madhyamik or equivalent exam.
- b. Marksheet of Madhyamik or equivalent exam.
- c. Registration Certificate of 10+2 level
- d. Marksheet of HS or equivalent exam.
- e. S.C. / S.T. / PWD. / O.B.C. Certificate /BPL card/ Job card of Parent(as applicable).

e) VERIFICATION :

Verification of documents and testimonial for confirmation of Provisional admission to 1st semester degree course in 2021-22 at Sonamukhi College. :

(All dates and time for verification will be published later on in the Sonamukhi College website)

Verification of documents and testimonials will be done by the college authority on scheduled dates and time that will be published in college website from time to time after commencement of classes or guideline by the Bankura University.

College authority will never be responsible for SMS/email to applicant. The applicants are directed to check college online website for their own interest.

****STUDENTS HAVE TO SUBMIT THE FOLLOWING FOR PROVISIONAL ADMISSION TO 1st semester DEGREE COURSES AT THE TIME OF PHYSICAL VERIFICATION AS AND WHEN NOTIFIED. ****

- (a) One attested photocopy of School Leaving Certificate (H.S.).
- (b) One attested photocopy of H.S. Mark-sheet.
- (c) One attested photocopy of H.S. Exam. Admit Card.
- (d) One attested photocopy of H.S. Exam., Registration Certificate.
- (e) One attested photocopy of H.S. Certificate.
- (f) One attested photocopy of M.P. Exam. Admit Card / Certificate.
- (g) One attested photocopy of M.P. Mark-sheet.
- (h) One attested photocopy of S.C. / S.T. / PwD. / O.B.C. Certificate (if applicable).
- (i) One stamp size colour photograph (for scan and upload only)
- (j) One annual income certificate of the Guardian for S.C./S.T./PwD./O.B.C.-A/B (non-creamy layer) (if applicable).
- (k) One attested copy of B.P.L. Certificate(if applicable).

All attested copies to be attached with the print out of online Application Form after the payment of admission fee. Copies of documents relating to bank payments are to be attached.

N.B.- Originals are to be produced at the time of verification for admission.

B) FEES FOR ADMISSION (Except the University fee)
(BKU fee will be collected as and when instructed by BKU)

Sl. No.	Subject	Category	Fee (Rs.)	Sl. No.	Subject	Category	Fee (Rs.)
1	Geography (H)	Honours	3640	17	Philosophy (P)	Programme	1970
2	Social Work(H)	Honours	3640	18	Education (P)	Programme	1970
3	Bengali (H)	Honours	2650	19	Geography(P)	Programme	2510
4	English (H)	Honours	2650	20	Physical Edc. (P)	Programme	2510
5	Sanskrit (H)	Honours	2650	21	Bot(H)	Honours	3950
6	History (H)	Honours	2650	22	Zoo(H)	Honours	3950
7	Political Sc.(H)	Honours	2650	23	Phys(H)	Honours	3650
8	Economics (H)	Honours	2650	24	Chem(H)	Honours	3650
9	Education (H)	Honours	2710	25	Comp Sc(H)	Honours	3650
10	Philosophy(H)	Honours	2710	26	Math (H)	Honours	3650
11	Bengali (P)	Programme	1910	27	Physics (P)	Programme	2770
12	English (P)	Programme	1910	28	Chem (P)	Programme	2770
13	Sanskrit (P)	Programme	1910	29	Math (P)	Programme	2770
14	Pol. Sc. (P)	Programme	1910	30	Botany (P)	Programme	3070
15	History (P)	Programme	1910	31	Zoology (P)	Programme	3070
16	Economics (P)	Programme	1910	32	B. Com. (H)	Honours	2830
				33	B. Com. (P)	Programme	1970

Bank charges extra (as applicable by PAYMENT GATEWAY).

C) COMMENCEMENT OF CLASS

Expected date of commencement will be notified later on.

In this current pandemic situation due to outbreak of Corona Virus Disease, classes are being held in On-line mode. So, may be, classes will start in On-line mode. Therefore, students are requested to be prepared for that up to whatever extent it is possible for them.



The Central Library: At a Glance

About Library: The Central Library of Sonamukhi College plays a key role in the teaching-learning process of the college. The library has a rich collection of around 30,185 (as per accession register, entered in the accession register latest by 06.04.2021) printed books, old and rare books, valuable reference books along with manuscript, journals and other e-resources for the use of its members. The Library is member of N - LIST (National Library and Information Services infrastructure for Scholarly Content) consortium of INFLIBNET through which the members of the Library can access 6300+ e-journals and 1,00,000 e-books. Besides this each Department also maintained Seminar Library/ Departmental Library for the use of students and Faculty members. All the books in the Library are now fully computerized and bar-coded for smooth circulation.

Financial year	Total No of Books Purchased	Remarks
2016-2017	587	Entered in the Accession register
2017-2018	722	Entered in the Accession register
2018-2019	1405	Entered in the Accession register
2019-2020	374	Entered in the Accession register
2020-2021	828	Entered in the Accession register

Library Rules & Regulation:

1. **Library Opening hours:** 10.00 a.m. to 4.30 p.m. (Monday to Saturday except Holidays)
2. **Borrowing Capacity:** (1).Students: 2 books for 15 days.
(2). Substantive Teachers & SACT: 3 books for 30 days.
3. **The Library is under CCTV Surveillance.**
4. **Members are allowed to use reading room on submission of their Library cards along with signature on reading room register. (Name/Dept/In time/Out time etc.)**
5. **Dishonour of Library rules, indiscipline and misbehaviour will render students liable to be denied access to the Library.**

Library Team:

Librarian: Manas Kumar Ganguli

Mail ID: sonamukhicollegelibrary@gmail.com

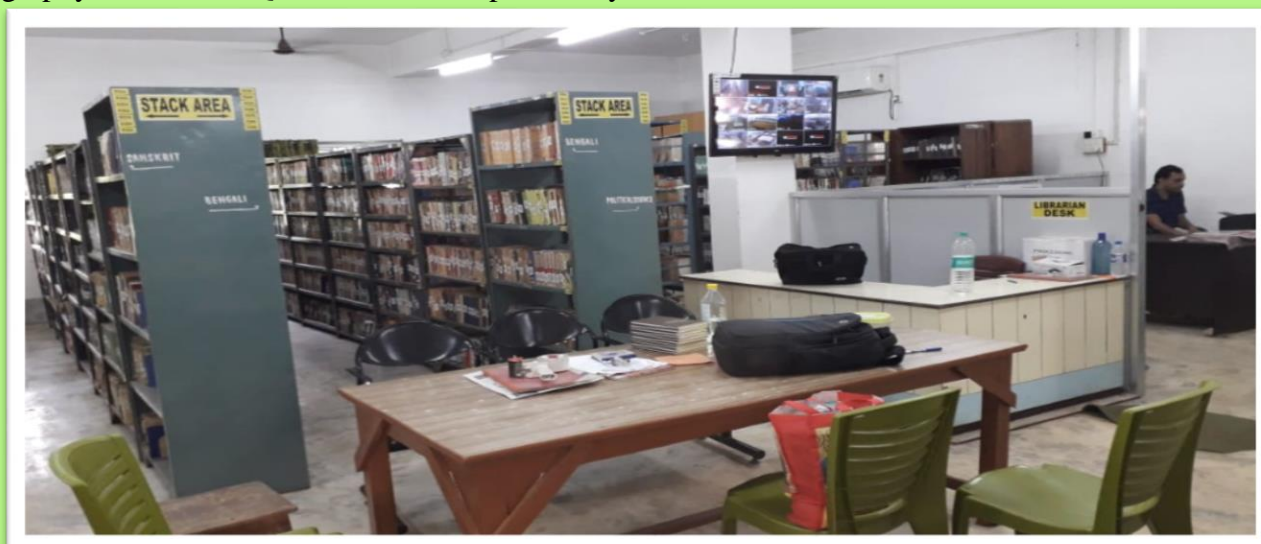
Library Web page: <http://www.sonamukhicollegebankura.com/library/>

Library OPAC search: <https://www.sonamukhicollege.com/Creport/Booksearch.aspx>

Library Staff:

1. Mrityunjay Mukherjee
2. Ayananta Lohar
3. Boni Roy

Services offered by the Library: 1. Automated Circulation 2. Lending books for home reading 3. Reading Room Facility 4. Current-awareness service to the readers through new arrivals display 5. Email alert 6. Career Guidance [Book Support] 7. Reference & Referral Service 8. Journal & News Paper 9. Reprography Service 10. Question bank for previous years.



Library Extension Activities:

Apart from the traditional library activities, The central library is also involved in providing library extension services for the benefit of the user community including User Orientation Programmes.

User Orientation Programmes: Library organizes User Orientation Programmes for the newcomers to the college in every year. This helps users in familiarizing with the Library collection and services, rules and regulations of the Library. Users are given hands-on training in searching Catalogue, user reference collection, e-resources, etc.

Resources at Reading Room:

Print journal: দেশ, যোজনা, Employment news weekly, কর্মক্ষেত্র, Along with other reference tools

Daily News paper: 1. আনন্দবাজার 2. Telegraph

Renewal of books: For renewal, a user has to bring books to the circulation counter. If a borrowed book has not any demand by other users, it may be renewed for consecutively two times.

Development of the Library Service: User Centric Service Pattern is being started. Feed-back system helps us to improve the quality of library service.

Best practices of our Library:

1. A.C reading room provide congenial environment to the readers.
2. CCTV Camera helps to watch the reader's activity in the Central Library.
3. A considerable number of periodicals are being subscribed.
4. For book selection, students demand is considered.
5. Clean and peaceful atmosphere inside the Library premises.
6. Book circulation beyond the specified time.

Library Services during COVID-19 for Students:

- This service includes Library orientation, important updates, New Arrival, Open Learning Resources, access guidance of E resources through NLIST, IITKGP, and Request on demand through mail, Current Awareness Services, Question Papers as per availability **through Telegram Group**.
- E-resources can be accessed through **Link to Library tab** from the Sonamukhi College Website through individual log in.

Future Projection:

1. Developing a Digital Library with Institutional Repository.
2. To introduce Web-OPAC(Online Public Access Catalogue) facilities to users
3. A considerable number of Journals would be subscribed.
4. Introduction of **"Best Library User"** award to inspire students.
5. The reference books, periodicals and current awareness sections will function from reading room for readers' convenience.
6. Online Feedback for further improvement of Library services.



Orientation training OPAC searching

COLLEGE STAFF

PRINCIPAL

Dr. Bappaditya Mandal, M.Sc., Ph.D.

Dept. of Bengali

1. Sk. Moinul Hoque, M.A., Assistant Professor.
2. Dr. Sumana Sanyal, M.A., Ph.D. Assistant Professor.
3. Smt. Bidisha Basu, M.A., M.Phil., Assistant Professor.
4. Dr. Irin Parvin, M.A., Ph.D., Assistant Professor.
5. Sk. Mokbul Hoque , M.A., SACT.
6. Smt. Tanima Mohanta, M.A., SACT.
7. Sri Mrinmoy Sarkar, M.A., M.P hil.,SACT.

Dept. of English

1. Sri Supriya Saha, M.A., Assistant Professor.
2. Sri Padmalochan Hansda, M.A., Assistant Professor.
3. Sri Indranath Mukherjee, M.A., SACT.
4. Sri Salil Bhui, M.A., SACT.
5. Smt. Tinku Palit, M.A., SACT.

Dept. of Sanskrit

1. Dr. Sadhan Kumar Patra, M.A., M.Phil., Ph.D. Assistant Professor.
2. Sri Anupam Mandal, M.A., Assistant Professor.
3. Sri Kajal Pal, M.A., SACT.
4. Smt. Purnima Shit, M.A., SACT.
5. Sri Achintya Adhikari, M.A., SACT.
6. Smt. Antara Konar, M.A., SACT.

Dept. of Political Science

1. Sri Indrajit Das, M.A., Associate Professor.
2. Sri Dipak Kumar Neogi, M.A., Associate Professor.
3. Smt. Swagata Chakraborty, M.A., SACT.
4. Smt. Kaberi Chatterjee, M.A., SACT.

Dept. of Philosophy

1. Smt. Sudhamayee Kumar, M.A., M.Phil., Assistant Professor.
2. Sri Ramprasad Kanrar, M.A., M.Phil., Assistant Professor.
3. Sri Jaydeep Singha, M.A., M.Phil., Assistant Professor.
4. Sri Ashok Dhani, M.A., SACT.
5. Smt. Suchandra Chatterjee, M.A., SACT.
6. Sri Milan Kundu, M.A., SACT.

Dept. of History

1. Sahazahan Zamadar, M.A., Assistant Professor.
2. Sri Asim Konar, M.A., SACT.
3. Sri Ashoke Ghosh, M.A., SACT.
4. Sri Madhab Kundu, M.A. , M. Phil., SACT.
5. Sri Manojit Ghosh, M.A. , SACT.
6. Sri Akshay Laha, M.A., SACT.

Dept. of Economics

1. Dr. Ratul Saha, M.A., Ph.D., Assistant Professor.
2. Dr. Kuheli Mukhopadhyay, M.Sc., Ph.D., Assistant Professor.

Dept. of Geography

1. Sri Ashis Pandit , M.A., Assistant Professor.
2. Sri Samit Dutta, M.A., SACT.
3. Sri Jhantu Bangal, M.A., SACT.

Dept. of Education

1. Sri Asim Kumar Guin, M.A., SACT.
2. Smt. Samapti Rudra, M.A., SACT.
3. Sri Prosenjit Rana, M.A., SACT.

Dept. of Commerce

1. Dr. Swapan Kumar Samanta, M.Com., Ph.D., Associate Professor.
2. Dr. Subir Kumar Chowdhury, M.Com., Ph.D., Assistant Professor.
3. Sri Asim Samajpati, M.Com., Assistant Professor.
4. Sri Rajesh Kumar Dikshit, M.Com., M.Phil. Assistant Professor.
5. Sri Jayanta Dutta, M.Com., Associate Professor.

Dept. of Physics

1. Dr. Saikat Dalui, M.Sc., Ph.D., Assistant Professor.
2. Dr. Saikat Basu, M.Sc., Ph.D., Assistant Professor.
3. Sri Bidhan Chowdhury, M.Sc., SACT.

Dept. of Chemistry

1. Dr. Sadhan Kumar Roy, M.Sc., Ph.D., Assistant Professor.
2. Dr. Jnanojjal Chanda, M.Sc., Ph.D., Assistant Professor.
3. Sri Santu Konar, M.Sc., SACT.

Dept. of Botany

1. Dr. Parthasarathi De, M.Sc., Ph.D., Associate Professor.
2. Dr. Dipak Kumar Hens, M.Sc., Ph.D., Assistant Professor.
3. Sudeshna Pal, M.Sc., SACT.

Dept. of Zoology

1. Smt. Subhasree Majumdar, M.Sc., Assistant Professor.
2. Sri Susobhan Mondal, M.Sc., Assistant Professor.
3. Sri Biplab Banerjee, M.Sc., G.L.I.
4. Sumana Kaviraj, M.Sc., SACT.
5. Sri Jyotirmoy Panja, M.Sc., SACT.

Dept. of Mathematics

1. Sri Joydeb Mondal, M.Sc., Associate Professor.
2. Sri Subhendu Ruidas, M.Sc., Assistant Professor.
3. Sri Biswajit Barat, M.Sc., (Invitee)

Dept. of Computer Science

1. Sri Subhajit Dey, M.C.A., SACT.

Dept. of Physical Education

1. Sri Swarup Mukherjee, M.P.Ed., SACT.

Dept. of Social Work

1. Sri Sujan Banerjee, MSW, (Invitee) [Under the supervision of Dr. R. Saha]

Library

1. Sri Manas Kumar Ganguli, M.A., MLIS., Librarian

Non-Teaching Staff

Class - III Staff

- | | | | |
|----|----------------------|---|-----------------------|
| 1. | Sri Mohan Ch. Datta | - | Head Clerk(In-Charge) |
| 2. | Sri Anisur R. Mandal | - | Accountant(In-Charge) |
| 3. | Sri Ananda Das | - | Cashier |
| 4. | Sri Asoke Gain | - | Clerk |
| 5. | Sri Ayananta Lohar | - | Clerk |

Class - IV Staff

- | | | | |
|----|-----------------------------|---|----------------|
| 1. | Sri Mrityunjay Mukherjee | - | Bearer |
| 2. | Sri Debasis Biswas | - | Bearer |
| 3. | Smt. Kunti Dom | - | Sweeper |
| 4. | Smt. Lilabati Bhattacharyay | - | Lab. Attendant |
| 5. | Sri Pradip Nag | - | Guard |
| 6. | Sri Lakshmi Kanta Mandi | - | Lab. Attendant |
| 7. | Smt. Bony Roy | - | Lib. Peon |
| 8. | Sri Swapan Ankure | - | Peon |

College Contractual Staff (Non-teaching)

- | | | |
|-------------------|----------------------|-------------------|
| 1. Sri Pradip Dey | 2. Sri Shankar Das | 3. Samar Ali Khan |
| 4. Sri Asis Pal | 5. Sri Biswanath Roy | 6. Amaresh Bagdi |



NCC activity during 2020-21

SONAMUKHI COLLEGE

GOVERNING BODY

1. Sri Surajit Mukherjee,
2. Dr. Bappaditya Mandal
3. Dr. Joymalya Ghar, Bishnupur District Hospital
4. Mr. Udaychand Saha
5. Dr. Nityananda Patra
6. Ms. Suchitra Mitra
7. Mr. Arpan Bhattacharya
8. Dr. Ratul Saha
9. Dr. Dipak Kumar Hens
10. Mr. Manas Kumar Ganguli
11. Anisur R. Mandal

- President.
- Secretary, G.B. & Principal.
- Government Nominee.
- Government Nominee.
- WB State Council Nominee
- University Nominee.
- University Nominee.
- Teachers' Representative.
- Teachers' Representative.
- Teachers' Representative.
- Non-teaching Representative.

BURSAR : Dr. Ratul Saha,
Assistant Prof. of Economics.

IQAC Co-ordinator : Dr. Jnanojjal Chanda
Assistant Prof. of Chemistry.



GB Meeting on 17/7/2020



'We and ours' – Beyond the Teaching-Learning-Evaluation :::

A series of national & International webinars :: Conducted by each and every departments of this college.

A new horizon, beyond the syllabus, for students, is evidenced in the air, in the web, in some social media. Some of the ideas : Quiz, Painting, Drawing, Slogan, food preparation and photography competitions . A tremendous amalgamation of Guests, resource persons, delegates, participants, judges, conveners and virtual platforms throwing out the constraints of language, culture and region.



List of programmes organized by the College during Academic Year 2020-21

- 1) International webinar on “RISE OF ARTIFICIAL INTELLIGENCE IN SCIENCE, TECHNOLOGY AND NEW OPPORTUNITIES FOR YOUNG MINDS IN POST COVID WORLD” organized by the Dept. of Physics in collaboration with IQAC, Sonamukhi College on 10-11th July, 2020.
- 2) National webinar on “IMPACT OF COVID 19 ON INDIAN ECONOMY: PROSPECTS AND CHALLENGES AHEAD” organized by the Dept. of Economics in collaboration with BRASS on 3rd August, 2020.
- 3) National webinar on “MIGRATION AND LIVELIHOOD UNDER THE COVID-19 PANDEMIC- CHALLENGES AND STRATEGIES” organized by the Dept. of Commerce in collaboration with the Dept. of Commerce, Alipurduar College on 22nd July, 2020.
- 4) National webinar on “COVID-19 PANDEMIC: PARADIGM SHIFT TOWARDS NEW NORMAL LIFE” organized by the Dept. of Chemistry in collaboration with IQAC, Sonamukhi College on 27th June, 2020.
- 5) National webinar on “HUMAN- VIRUS INTERACTION: PRESENT AND FUTURE PERSPECTIVE” organized by the Dept. of Botany in collaboration with IQAC, Sonamukhi College on 26th August, 2020.
- 6) National webinar on “AWARENESS OF E RESOURCES AND THEIR ACCESS BY THE ACADEMIC COMMUNITY TO OVERCOME THE COVID 19 PANDEMIC” organized by the Central Library in collaboration with IQAC, Sonamukhi College on 21st September, 2020.
- 7) National webinar on “ROLE OF VARIOUS MATHEMATICAL SOFTWARE TO MAKE SCIENCE TEACHING AND LEARNING MORE MEANINGFUL” organized by the Dept. of Mathematics in collaboration with the Dept. of Physics, Sonamukhi College on 29th August, 2020.
- 8) International webinar on “THE AYURVEDA AND PRESENT PANDEMIC” organized by the Dept. of Sanskrit in collaboration with IQAC, Sonamukhi College on 30-31th July, 2020.
- 9) Webinar on “LOKOSANSKRITITE LOKOSANGEET” organized by the Dept. of Bengali, Sonamukhi College on 28th August, 2020.
- 10) Webinar on “YOGA IN PANDEMIC SITUATION: THEORY AND PRACTICE” organized by the Dept. of Philosophy, Sonamukhi College sponsored by INDIAN COUNCIL OF PHILOSOPHICAL RESEARCH on 6th July, 2020.
- 11) National webinar on “NATIONAL EDUCATION POLICY 2020” organized by the Dept. of Education in collaboration with the Dept. of Pol. Sc., Sonamukhi College on 21st August, 2020.
- 12) International webinar on “PARTITION: -PSYCHO-SOCIO-CULTURAL DIALECTICS” organized by the Dept. of History Sonamukhi College on 25-26th July, 2020.
- 13) Webinar on “PSYCHOLOGICAL POBLEMS DURING COVID-19: ITS IMPACT & REMEDIES” organized by the Seminar Committee in collaboration with the Placement Cell and Remedial Cell, Sonamukhi College on 3rd September, 2020.
- 14) National webinar on “STRUGGLE FOR COEXISTENCE: AFFECT OF ANTHROPOCENE ON NON-HUMAN LIFE FORMS” organized by the Dept. of Zoology in collaboration with IQAC, Sonamukhi College on 20th June, 2020.
- 15) Webinar on “ISSUES RELATED TO PROMOTION AND PROTECTION OF INTELLECTUAL PROPERTY RIGHTS” organized by the Seminar Committee in collaboration with IQAC, Sonamukhi College on 11th November, 2020.
- 16) Webinar on “LITERATURE ON INDIAN DIASPORA” organized by the Dept. of English, Sonamukhi College on 11th January, 2021.
- 17) A series of lecture on “ CLASSICAL AND CONTEMPORARY INDIAN PHILOSOPHERS AND THEIR THOUGHTS: REVISITING AND RETHINKING” organized by the Dept. of Philosophy, Sonamukhi College sponsored by the Indian Council of Philosophical Research (vide payment advice no: C032151795785 dated 25/03/2021) during 25th June and 6th July 2021.

- 18) The Dept. of Physical Education acted as a collaborative partner on the webinar on “YOGIC CULTURE FOR WELLNESS IN POST COVID PERIOD” organized by the Dept. of Physical Education, Nistarini College, Purulia on 18-21st June, 2021.
- 19) E-Quiz competition on “GENERAL ENGLISH AND ENGLISH LITERATURE COMPETENCE” organized by the Dept. of English in collaboration with the Central Library, Sonamukhi College on 23rd August, 2020.
- 20) Online Essay writing competition on “CHANGE IN DAY TO DAY LIFESTYLE DURING COVID-19 LOCKDOWN” organized by the Dept. of Economics, Sonamukhi College on the month of July 2020.
- 21) E-Quiz competition on “General awareness Quiz on Independence Day of India and COVID-19” organized by the Dept. of Geography, Sonamukhi College on 12-17th August 2020.
- 22) Celebration of the International Yoga Day by the NSS UNIT I, II and III on 21st June 2020.
- 23) Tree plantation programme organized by the NSS UNIT I, II and III on 24-25th June 2020.
- 24) Online Quiz competition on “HEALTH AND SAFETY AWARENESS” organized by the NSS UNIT I, II and III on 18-19th July 2020.
- 25) DENGUE AND COVID 19 AWARENESS programme organized by the NSS UNIT I, II and III on 14th August 2020.
- 26) Online Cultural competition organized by the NSS UNIT I, II and III on 27th June 2020.
- 27) Online Extempore speech contest organized by the Dept. of History in collaboration with the Dept. of Pol. Sc., Sonamukhi College on 18th August, 2020.
- 28) Online Essay writing competition for college and university students organized by the Dept. of Pol. Sc., Sonamukhi College on 30th July, 2020.
- 29) Online Drawing and Painting competition for college and university current and Ex students (aged below 28 years) organized by the Dept. of Pol. Sc. in collaboration with the IQAC, Sonamukhi College on 1st August, 2020.
- 30) Online Slogan and Poster writing competition organized by the Dept. of Pol. Sc. in collaboration with the Dept. of Computer Sc., Sonamukhi College sponsored by KJS Cement, Rainagar, MP on 12th August, 2020.
- 31) Online Photography contest for school, college, university students and any ex-student aged below 30 years organized by the Dept. of Pol. Sc. in collaboration with the Dept. of Computer Sc., Sonamukhi College on 15th August, 2020.
- 32) Online Indoor Cooking (Veg. Recipes) contest organized by the Dept. of Physical Education in collaboration with the Dept. of Pol. Sc., Sonamukhi College on 31st August, 2020.
- 33) Online Story telling contest organized by the Dept. of Pol. Sc. in collaboration with the Dept. of Bengali, Sonamukhi College on 27th September, 2020.
- 34) Online Short Story Writing contest organized by the Dept. of Bengali in collaboration with the Dept. of Pol. Sc., Sonamukhi College on 30th September, 2020.
- 35) Symposium on CAREER COUNSELLING FOR THE OUTGOING STUDENTS organized by the Training and Placement Cell, Sonamukhi College on 17-18th October, 2020.
- 36) Awareness drive on World AIDS Day organized by the NSS UNIT I, II and III on 1st December 2020.

BANKURA UNIVERSITY

UG SUBJECT ID SEMESTER-I

SUBJECT	CORE-I IA	CORE-I ESE	CORE-I PRACTICAL	CORE-II IA	CORE-II ESE	CORE-II PRACTICAL	GE IA	GE ESE	GE PRACTICAL	DSC (PROG) IA	DSC (PROG) ESE	DSC (PROG) PRACTICAL	ENGLISH(SUBJECTIVE/CO RE) EIA	ENGLISH(SUBJECTIVE/CO RE) ESE	SEC / AECC(MIL COMMUNICATION)_MCQ / IA	SEC / AECC(MIL COMMUNICATION)_MCQ / ESE	PRAC. SEC (PROG) / AECC(MIL COMMUNICATION)_MCQ / ESE
	CORE-I			CORE-II			GE			DSC (PROG)			MIL CORE		AECC		
BENGALI (01)	10101	10111		10102	10112		10104	10114		10108	10118		10109	10119			
EDUCATION (02)	10201	10211		10202	10212		10204	10214		10208	10218						
ENGLISH (03)	10301	10311		10302	10312		10304	10314		10308	10318		10309	10319			
HISTORY (04)	10401	10411		10402	10412		10404	10414		10408	10418						
MUSIC (05)	10501	10511		10502		10522	10504	10514		10508	10518						
PHILOSOPHY (06)	10601	10611		10602	10612		10604	10614		10608	10618						
PHYSICAL EDUCATION(07)	10701	10711	10721	10702	10712	10722	10704	10714	10724	10708	10718	10728					
POLITICAL SCIENCE (08)	10801	10811		10802	10812		10804	10814		10808	10818						
SANSKRIT(09)	10901	10911		10902	10912		10904	10914		10908	10918		10909	10919			
SANTALI (10)	11001	11011		11002	11012		11004	11014		11008	11018		11009	11019			
SOCIOLOGY (11)	11101	11111		11102	11112		11104	11114		11108	11118						
COMMERCE (12)	11201	11211		11202	11212		11204	11214		11208	11218						
BOTANY (13)	11301	11311	11321	11302	11312	11322	11304	11314	11324	11308	11318	11328					
CHEMISTRY (14)	11401	11411	11421	11402	11412	11422	11404	11414	11424	11408	11418	11428					
COMPUTER SCIENCE (15)	11501	11511	11521	11502	11512	11522	11504	11514	11524	11508	11518	11528					
ECONOMICS (16)	11601	11611		11602	11612		11604	11614		11608	11618						
ELECTRONICS (17)	11701	11711	11721	11702	11712	11722	11704	11714	11724	11708	11718	11728					
ENVIRONMENTAL SCIENCE (18)	11801	11811	11821	11802	11812	11822	11804	11814	11824	11808	11818	11828			11800	11810	
GEOGRAPHY (19)	11901	11911		11902		11922	11904	11914		11908	11918						
GEOLOGY (20)	12001	12011	12021	12002	12012	12022	12004	12014	12024	12008	12018	12028					
MATHEMATICS (21)	12101	12111		12102	12112		12104	12114		12108	12118						
MICROBIOLOGY (22)	12201	12211	12221	12202	12212	12222	12204	12214	12224	12208	12218	12228					
NUTRITION (23)	12301	12311	12321	12302	12312	12322	12304	12314	12324	12308	12318	12328					
PHYSICS (24)	12401	12411	12421	12402	12412	12422	12404	12414	12424	12408	12418	12428					
PHYSIOLOGY (25)	12501	12511	12521	12502	12512	12522	12504	12514	12524	12508	12518	12528					
ZOOLOGY (26)	12601	12611	12621	12602	12612	12622	12604	12614	12624	12608	12618	12628					
DEFENCE STUDIES (29)	12901	12911	12921	12902	12912	12922	12904	12914	12924	12908	12918	12928					

THANK YOU